

# Tactical TEMPEST Command and Control Center™

## GSA Schedule 84 GS-07F-9545S



## GSA Catalog – August 2006



**Action  
Systems**

a division of V&A Incorporated

Action Systems is an authorized reseller for

THE **T2/C3** GROUP

Action Systems

7825 Helen of Troy Drive

El Paso, TX 79912

Ph: 915.845.6606

FAX: 915.845.1353

Web: <http://www.goaction.com>

Action Systems  
7825 Helen of Troy Drive  
El Paso, TX 79912

Phone: 915.845.6606  
Toll Free: 866.438.8223  
Web: <http://www.goaction.com>

Copyright © 2006 Action Systems. No part of this catalog may be stored in a retrieval system, transmitted, or reproduced in any way, including but not limited to photocopy, photograph, magnetic or other record, without the prior agreement and written permission of Action Systems.

## Table Of Contents

<b>Copyright Notice</b> .....	<b>2</b>
<b>Table of Contents</b> .....	<b>3</b>
<b>GSA Contract Information</b> .....	<b>4</b>
<b>Shielded Products</b> .....	<b>8</b>
<b>Shielded Pouches</b> .....	<b>8</b>
<b>Phones/PDA</b> .....	<b>8</b>
<b>Computer</b> .....	<b>9</b>
<b>Other Pouches</b> .....	<b>10</b>
<b>Shielded Enclosures and Cases</b> .....	<b>11</b>
<b>Shielded Enclosures</b> .....	<b>11</b>
<b>Cases for Shielded Enclosures</b> .....	<b>14</b>
<b>Shielded Enclosure Panels</b> .....	<b>17</b>
<b>Power and Signal Panels, Complete</b> .....	<b>17</b>
<b>Power and Signal Panels, Components</b> .....	<b>21</b>
<b>Shielded Product Accessories</b> .....	<b>24</b>
<b>ECU</b> .....	<b>24</b>
<b>Lighting</b> .....	<b>26</b>
<b>Logos</b> .....	<b>27</b>
<b>Other Accessories</b> .....	<b>29</b>
<b>Testing and Test Products</b> .....	<b>29</b>
<b>Other Products</b> .....	<b>30</b>
<b>Cases for Communications and Computer Systems</b> .....	<b>30</b>
<b>Miscellaneous Products</b> .....	<b>31</b>
<b>General Information</b> .....	<b>32</b>

**GSA SCHEDULE # GS-07F-9545S  
MULTIPLE AWARD SCHEDULE  
June 16, 2006 through June 15, 2011**



[www.goaction.com](http://www.goaction.com)

**AUTHORIZED FEDERAL SUPPLY SERVICE  
INFORMATION TECHNOLOGY SCHEDULE PRICELIST  
GENERAL PURPOSE COMMERCIAL INFORMATION TECHNOLOGY  
EQUIPMENT, SOFTWARE AND SERVICES**

Schedule 084 Total Solutions for Law Enforcement, Security,  
Facility management Systems, Fire, Rescue, Special purpose Clothing, Marine Craft  
and Emergency/Disaster Response  
MULTIPLE AWARD SCHEDULE  
SOLICITATION NO. 7FCI-L3-03-0084-B

**V & A Incorporated**  
**7825 Helen of Troy, El Paso TX 79912**  
**PH:915-845-6606 Fax: 915-845-1353**  
[theresa@goaction.com](mailto:theresa@goaction.com)

**Issued By**  
***General Services Administration  
Federal Supply Service***

**Special Item Numbers**  
***426-4N Criminal Investigative  
Equipment and Supplies***

**Price List is Current Award**

**Product and ordering information is this Authorized Schedule 084  
Schedule Pricelist are also available on the GSA Advantage! System. Agencies  
can browse GSA Advantage! By accessing the Federal Supply Service's Home  
Page via the Internet at <http://www.fss.gsa.gov/>**

**Price list current through Award**

**Action Systems, a Division of V & A Incorporated PH: 915 845-6606  
Fax: 915-845-1353**

**GENERAL SERVICES ADMINISTRATION  
FEDERAL SUPPLY SERVICE  
AUTHORIZED FEDERAL SUPPLY SCHEDULE PRICELIST**

On-line access to contract ordering information, terms and conditions, up-to-date pricing, and the option to create an electronic delivery order are available through GSA Advantage!™, a menu-driven database system. The INTERNET address for GSA Advantage!™ is: <http://www.fss.gsa.gov>.

Federal Supply Schedule 084 – Total Solutions for Law Enforcement, Security, Facility Management Systems, Fire, Rescue, Special Purpose Clothing, Marine Craft and Emergency/Disaster Response;  
Group 84 – Law Enforcement and Security Equipment

Contract Number: GS-07F-9545S

Contract Period: 06/16/06 through 06/15/11

For more information on ordering from Federal Supply Schedules, click on the FSS Schedules button at <http://www.fss.gsa.gov>.

CONTRACTOR: Name V & A Incorporated dba Action Systems

Address 7825 Helen of Troy Dr.  
Address El Paso, TX 79912  
Phone (915) 845-6606  
Fax (915) 845-1353

Contract Administration: Theresa Valdez-Harvey

Business Size: S, W, SDB

**CUSTOMER INFORMATION:**

**1a. Awarded Special Item Number(s):**

[426-4N Criminal Investigative Equipment](#)

**1b. Lowest Priced Item D00402 Shielded Pouch**

Special Item Number: 426-4N (To be inserted  
by contractor prior to distribution)

**1c. See accepted price list**

**2. MAXIMUM ORDER GUIDELINE:**

**426 – 4N \$ 200,000.00 per order**

\*If the best value selection places your order over the Maximum Order identified in this catalog/pricelist, you have an opportunity to obtain a better schedule contract price. Before placing your order, contact the aforementioned contractor for a better price. The contractor may (1) offer a new price for this requirement (2) offer the lowest price available under this contract or (3) decline the order. A delivery order that exceeds the maximum order may be placed under the schedule contract in accordance with FAR 8.404.

**3. MINIMUM ORDER LIMITATION: \$ 500.00**

**4. GEOGRAPHIC COVERAGE:** Domestic: 50 states, Washington D.C., Puerto Rico, US Territories and to a CONUS port or consolidation point for orders received from oversea activities.

**5. PRODUCTION POINT:** El Paso, El Paso County, TX

**6. BASIC DISCOUNT:** The awarded price lists for the GSA Multiple Award Schedule (MAS) Contract is V & A Incorporated dba Action Systems 2005-SH-121601 Commercial Price List with a negotiated basic discount of 10.675%. For calculation of the GSA Schedule price (price paid by customers ordering from the GSA Schedule), the contractor should deduct the basic discount from the retail price and add the prevailing IFF rate to the negotiated discount price (Net GSA price). Currently the IFF rate is 0.75%.

**7. QUANTITY DISCOUNTS:** 100 – 199 units: 1% (11.675% total)  
200 + units: 2% (12.675% total)

**8. PROMPT PAYMENT TERMS:** 1%, 15 days, n/30

**9. GOVERNMENT PURCHASE CARDS:** Yes, at any level

**10. FOREIGN ITEMS:** None

**11a. TIME OF DELIVERY:** 90 Days ARO

**11b. EXPEDITED DELIVERY:** 60 Days ARO

**11c. OVERNIGHT DELIVERY:** None

**11d. URGENT REQUIREMENTS:** None

**12. FOB POINT:** CONUS: Origin, Freight prepaid and allowed  
AK, HI, PR and US Territories: Origin

**13a. ORDERING ADDRESS:** V & A Incorporated dba Action Systems  
7825 Helen of Troy Dr.  
El Paso, TX 79912  
PH: 915-845-6606  
FX: 915-845-1353

**13b. ORDERING PROCEDURES:** For Supplies and Services, the ordering procedures, information on Blanket Purchase Agreements (BPA's) and a sample BPA can be found at the [GSA/FSS Schedule homepage \(fss.gsa.gov/schedules\)](http://fss.gsa.gov/schedules).

**14. PAYMENT ADDRESS:** V & A Incorporated dba Action Systems  
7825 Helen of Troy Dr.  
El Paso, TX 79912  
PH: 915-845-6606  
FX: 915-845-1353

**15. WARRANTY PROVISIONS:** SCW - [Customer should contact the contractor for a copy of the warranty.](#)

**16. EXPORT PACKING CHARGES:** N/A

**17. TERMS AND CONDITIONS OF GOVERNMENT PURCHASE CARD ACCEPTANCE:** N/A

**18. TERMS AND CONDITIONS OF RENTAL:** N/A

**19. TERMS AND CONDITIONS OF INSTALLATION:** N/A

**20. TERMS AND CONDITIONS OF REPAIR PARTS:** N/A

**20a. TERMS AND CONDITIONS FOR ANY OTHER SERVICES:** N/A

**21. LIST OF SERVICE AND DISTRIBUTION POINTS:** N/A

**22. LIST OF PARTICIPATING DEALERS:** N/A

**23. PREVENTATIVE MAINTENANCE:** N/A

**24a. SPECIAL ATTRIBUTES:** N/A

**24b. SECTION 508:** N/A

**25. DATA UNIVERSAL NUMBER SYSTEM (DUNS) NUMBER:** 122639701

**26. NOTIFICATION REGARDING REGISTRATION IN CENTRAL CONTRACTOR REGISTRATION (CCR) DATABASE:** Registration valid until March 2007  
(*To be inserted by contractor prior to distribution*)

## Shielded Products

### Shielded Pouches

#### Phones/PDA

**Part No:** D00396 **Base Price:** \$1,767.91  
**Name:** Shielded Pouch, Velcro Closure, (12 cell phones) **SIN:** 426-4N

**Description**

RF Shielded Phone Pouch, 28"x16"x2', 12 interior pockets for cellular phone storage and 12 interior bands to hold pagers, hook on exterior to hang phone bag and carrying handle. Devices within the secured pouch cannot sent or receive electronic signal rendering devices such as cellular phones and computers with wireless LAN capabilities inoperable.



**Part No:** D00397 **Base Price:** \$46.13  
**Name:** Shielded Pouch, Velcro Closure, (1 cell phone) **SIN:** 426-4N

**Description**

RF Shielded pouch designed for personal cell phone that clips to user's belt. Devices within the secured pouch cannot sent or receive electronic signal rendering devices such as cellular phones and computers with wireless LAN capabilities inoperable.



**Part No:** D00403 **Base Price:** \$30.15  
**Name:** Shielded Pouch, Velcro Closure, (Pager) **SIN:** 426-4N

**Description**

RF Shielded pouch for Pager that clips to user's belt Devices within the secured pouch cannot sent or receive electronic signal rendering devices such as cellular phones and computers with wireless LAN capabilities inoperable.



**Part No:** D00404 **Base Price:** \$49.95  
**Name:** Shielded Pouch, Velcro Closure, (PDA) **SIN:** 426-4N

**Description**

RF Shielded pouch for personal PDA or other electronic organizer that clips to user's belt. Devices within the secured pouch cannot sent or receive electronic signal rendering devices such as cellular phones and computers with wireless LAN capabilities inoperable.





<b>Part No:</b> D00405	<b>Base Price:</b> \$102.86
<b>Name:</b> Shielded Pouch, Velcro Closure, (satellite phone)	<b>SIN:</b> 426-4N

**Description**

RF Shielded pouch designed for one satellite phone that clips to user's belt. Devices within the secured pouch cannot sent or receive electronic signal rendering devices such as cellular phones and computers with wireless LAN capabilities inoperable.



<b>Part No:</b> D00568	<b>Base Price:</b> \$165.68
<b>Name:</b> Shielded Pouch, Dual Blackberry/Cell Phone (6.5"x10")	<b>SIN:</b> 426-4N

**Description**

Pouch made from the same shielding materials that are used in the T-TEMPEST™ enclosures shields the contents of the pouch making them inoperable when the pouch is closed. Security loops used with cable ties can be used to verify case was not opened.



## Computer

<b>Part No:</b> D00395	<b>Base Price:</b> \$325.28
<b>Name:</b> Shielded Pouch, Velcro Closure, 16"x14"	<b>SIN:</b> 426-4N

**Description**

RF Shielded Pouch size 16"x14", Velcro closure Devices within the secured pouch cannot sent or receive electronic signal rendering devices such as cellular phones and computers with wireless LAN capabilities inoperable.



## Other Pouches

<b>Part No:</b> D00402	<b>Base Price:</b> \$25.72
<b>Name:</b> Shielded Pouch, Velcro Closure, (ID Card)	<b>SIN:</b> 426-4N

### Description

RF Shielded Encryption Card/ID Holder with neck strap Devices within the secured pouch cannot sent or receive electronic signal rendering devices such as cellular phones and computers with wireless LAN capabilities inoperable.



<b>Part No:</b> D00406	<b>Base Price:</b> \$120.01
<b>Name:</b> Shielded Sack, Draw String Closure, 9.5"x4.25"	<b>SIN:</b> 426-4N

### Description

RF Shielded general purpose stuff sack, approximately 9.5"x4.25", with draw-string closure Devices within the secured pouch cannot sent or receive electronic signal rendering devices such as cellular phones and computers with wireless LAN capabilities inoperable.



<b>Part No:</b> D00407	<b>Base Price:</b> \$157.17
<b>Name:</b> Shielded Sack, Draw String Closure, 12.5"x18"	<b>SIN:</b> 426-4N

### Description

RF Shielded general purpose stuff sack, approximately 12.5"x18", with draw-string closure. Devices within the secured pouch cannot sent or receive electronic signal rendering devices such as cellular phones and computers with wireless LAN capabilities inoperable.



<b>Part No:</b> D00569	<b>Base Price:</b> \$173.33
<b>Name:</b> Shielded Pouch, Multiple Device (8"x10")	<b>SIN:</b> 426-4N

### Description

Pouch made from the same shielding materials that are used in the T-TEMPEST™ enclosures shields the contents of the pouch making them inoperable when the pouch is closed. Security loops used with cable ties can be used to verify case was not opened.



## Shielded Enclosures and Cases

### Shielded Enclosures

**Part No:** D00348  
**Name:** Enclosure, T-TEMPEST, 4' x 2' x 2' (Tabletop) **Base Price:** \$17,086.76  
**SIN:** 426-4N

#### Description

T-TEMPEST™ Version Table Top RF Shielded Enclosure approximate size 4'x2'x2' with approximately eight (8) square feet of space with Shielded glass window in door. Includes: honeycomb vent, interior lighting, multi-outlet surge suppressor. T2C3 components are designed to minimize size, weight and power and with their patented features. This T-TEMPEST™ (50db) shielded enclosure is configured for handling secure data up to NSA Type 1 on a tabletop.



**Part No:** D00353  
**Name:** Enclosure, T-TEMPEST, 3' x 6' x 7' **Base Price:** \$33,545.22  
**SIN:** 426-4N

#### Description

T-TEMPEST™ version RF Shielded Enclosure approximate size 3'x6'x7' with approximately eighteen (18) square feet of floor space with a two door entry system and connector docking capability. Includes: Honeycomb vents, environmental control docking system T2C3 components are designed to minimize size, weight and power and with their patented features. This T-TEMPEST™ (60db) shielded enclosure is configured for handling secure data up to NSA Type 1 can be shipped in a cases that are airline checkable (80").



**Part No:** D00356  
**Name:** Enclosure, T-TEMPEST, 6' x 6' x 7' **Base Price:** \$44,087.57  
**SIN:** 426-4N

#### Description

T-TEMPEST™ version RF Shielded Enclosure approximate size 6'x6'x7' with approximate thirty-six (36) square feet of floor space with a two door entry system and connector docking capability. Includes: Honeycomb vents, environmental control docking system. T2C3 components are designed to minimize size, weight and power and with their patented features. This T-TEMPEST™ (60db) shielded enclosure is configured for handling secure data up to NSA Type 1 can be shipped in a cases that are airline checkable (80").



**Part No:** D00361  
**Name:** Enclosure, T-TEMPEST, 6' x 9' x 7' **Base Price:** \$49,775.28  
**SIN:** 426-4N

#### Description

T-TEMPEST™ version RF Shielded Enclosure approximate size 6'x9'x7' with approximately fifty-four (54) square feet of floor space with a two door entry system, connector docking capability, no foyer. Includes: Honeycomb vents, environmental control docking. T2C3 components are designed to minimize size, weight and power and with their patented features. This T-TEMPEST™ (60db) shielded enclosure is configured for handling secure data up to NSA Type 1 can be shipped in a cases that are airline checkable (80").



**Part No:** D00363  
**Name:** Enclosure, T-TEMPEST, 6' x 9' x 7' with Vestibule **Base Price:** \$53,416.41  
**SIN:** 426-4N

#### Description

T-TEMPEST™ version RF Shielded Enclosure approximate size 6'x9'x7' with approximately forty-five (45) square feet of floor space. Three door entry system with 3'x3' foyer and connector docking capability. Includes: Honeycomb vent, environmental control. T2C3 components are designed to minimize size, weight and power and with their patented features. This T-TEMPEST™ (60db) shielded enclosure is configured for handling secure data up to NSA Type 1 can be shipped in a cases that are airline checkable (80").



<b>Part No:</b> D00367	<b>Base Price:</b> \$60,384.96
<b>Name:</b> Enclosure, T-TEMPEST, 9' x 12' x 7'	<b>SIN:</b> 426-4N

**Description**

T-TEMPEST™ version RF Shielded Enclosure approximate size 9'x12'x7' with approximately one hundred and eight (108) square feet of floor space with two door entry system, and connector docking capability. No foyer. T2C3 components are designed to minimize size, weight and power and with their patented features. This T-TEMPEST™ (60db) shielded enclosure is configured for handling secure data up to NSA Type 1.



<b>Part No:</b> D00369	<b>Base Price:</b> \$68,205.84
<b>Name:</b> Enclosure, T-TEMPEST, 9' x 12' x 7' with Vestibule	<b>SIN:</b> 426-4N

**Description**

The T-TEMPEST™ version RF Shielded Enclosure identical to 9'x12'x7' with addition of three door entry system and 3'x3' foyer. Approximately ninety-nine (99) square feet of floor space. Includes same accessories. T2C3 components are designed to minimize size, weight and power and with their patented features. This T-TEMPEST™ (60db) shielded enclosure is configured for handling secure data up to NSA Type 1.



<b>Part No:</b> D00375	<b>Base Price:</b> \$80,658.00
<b>Name:</b> Enclosure, T-TEMPEST, 12' x 12' x 7'	<b>SIN:</b> 426-4N

**Description**

T-TEMPEST™ version RF Shielded Enclosure approximate size 12'x12'x7' with approximately one hundred forty four (144) square feet of floor space. Two door entry system, connector docking capability, no foyer. Includes: Honeycomb vents, environmental controlled T2C3 components are designed to minimize size, weight and power and with their patented features. This T-TEMPEST™ (60db) shielded enclosure is configured for handling secure data up to NSA Type 1.



<b>Part No:</b> D00377	<b>Base Price:</b> \$85,315.59
<b>Name:</b> Enclosure, T-TEMPEST, 12' x 12' x 7' with Vestibule	<b>SIN:</b> 426-4N

**Description**

T-TEMPEST™ version RF Shielded Enclosure identical to 12'x12'x7' with addition of a 3'x3' foyer and three door entry system. Approximately one hundred thirty five (135) square feet of floor space. Includes same accessories. T2C3 components are designed to minimize size, weight and power and with their patented features. This T-TEMPEST™ (60db) shielded enclosure is configured for handling secure data up to NSA Type 1.



<b>Part No:</b> D00508	<b>Base Price:</b> \$17,086.76
<b>Name:</b> Enclosure, T-TEMPEST, Ultra Light Table Top	<b>SIN:</b> 426-4N

**Description**

Ultra light version of the tabletop shielded (50db) enclosure is approximately 50% of the weight of the standard light weight configuration. Weight savings are achieved utilizing lighter weight fabrics and modified frame and casing solutions. T2C3 components are designed to minimize size, weight and power and with their patented features. This T-TEMPEST™ (50db) shielded enclosure is configured for handling secure data up to NSA Type 1 and stows and ships in airline checkable cases.



<b>Part No:</b> D00509	<b>Base Price:</b> \$33,545.22
<b>Name:</b> Enclosure, T-TEMPEST, Ultra Light, 3' x 6' x 7'	<b>SIN:</b> 426-4N

**Description**

Ultra light version of the medium shielded (60db) enclosure is approximately 50% of the weight of the standard light weight configuration. Weight savings are achieved with the utilization of lighter weight fabrics and modified frame and casing solutions. T2C3 components are designed to minimize size, weight and power and with their patented features. This T-TEMPEST™ (60db) shielded enclosure is configured for handling secure data up to NSA Type 1 and stows and ships in airline checkable cases.



<b>Part No:</b> D00510	<b>Base Price:</b> \$49,775.28
<b>Name:</b> Enclosure, T-TEMPEST, Ultra Light, 6' x 9' x 7'	<b>SIN:</b> 426-4N

**Description**

Ultra light version of the medium shielded (60db) enclosure is approximately 50% of the weight of the standard light weight configuration. Weight savings are achieved with the utilization of lighter weight fabrics and modified frame and casing solutions. T2C3 components are designed to minimize size, weight and power and with their patented features. This T-TEMPEST™ (60db) shielded enclosure is configured for handling secure data up to NSA Type 1 and stows and ships in airline checkable cases.



<b>Part No:</b> D00511	<b>Base Price:</b> \$60,384.96
<b>Name:</b> Enclosure, T-TEMPEST, Ultra Light 9' x 12' x 7'	<b>SIN:</b> 426-4N

**Description**

Ultra light version of the large shielded (60db) enclosure is approximately 50% of the weight of the standard light weight configuration. Weight savings are achieved with the utilization of lighter weight fabrics and modified frame and casing solutions. T2C3 components are designed to minimize size, weight and power and with their patented features. This T-TEMPEST™ (60db) shielded enclosure is configured for handling secure data up to NSA Type 1 and stows and ships in airline checkable cases.



<b>Part No:</b> D00527	<b>Base Price:</b> \$21,320.60
<b>Name:</b> 2800 Series Tabletop Enclosure	<b>SIN:</b> 426-4N

**Description**

Transit case (22"x28"x9") designed to transport and serve as a table for the Ultra Light Tabletop Enclosure (C00508) T2C3 workstations are designed to minimize size, weight and power and with their patented features configured for handling secure data up to NSA Type 1.



<b>Part No:</b> D00555	<b>Base Price:</b> \$18,415.70
<b>Name:</b> 2100 Series Tabletop System (includes Case and Shielded Enclosure)	<b>SIN:</b> 426-4N

**Description**

This airline carry-on sized (9"x14"x22") case with an integral tote handle and wheels comes complete with a tabletop T-TEMPEST™ enclosure (approximately) 4 feet long, 2 feet tall and 2 feet deep. Power and Signal Panels must be ordered separately. T2C3 components are designed to minimize size, weight and power and with their patented features can provide for handling secure data up to NSA Type 1 in configurations that are designed for tactical applications.



## Cases for Shielded Enclosures

**Part No:** D00364 **Base Price:** \$1,020.56  
**Name:** Case, Hard Transit, for 6' x 9' x 7' Enclosure **SIN:** 426-4N

### Description

Hard Transit Case for 6'x9'x7' enclosure. Airline checkable case that is configured for the 6'x9'x7' enclosure.

No Image  
Available

**Part No:** D00365 **Base Price:** \$821.92  
**Name:** Case, Hard Transit, for 6' x 9' x 7' Frame **SIN:** 426-4N

### Description

Hard Transit Case for 6'x9'x7' frame. Airline checkable case configured for 6'x9'x7' frame.

No Image  
Available

**Part No:** D00371 **Base Price:** \$1,133.57  
**Name:** Case, Hard Transit, for 9' x 12' x 7' Enclosure **SIN:** 426-4N

### Description

Hard Transit Case for 9'x12'x7' enclosure. Hard case configured for 9'x12'x7' enclosure.

No Image  
Available

**Part No:** D00372 **Base Price:** \$1,158.84  
**Name:** Case, Hard Transit, for 9' x 12' x 7' Enclosure and Power Panels **SIN:** 426-4N

### Description

Hard Transit Case for 9'x12'x7' enclosure and power & signal plates.

No Image  
Available

**Part No:** D00373 **Base Price:** \$1,193.49  
**Name:** Case, Hard Transit, for 9' x 12' x 7' Frame **SIN:** 426-4N

### Description

Hard Transit Case for 9'x12'x7' frame.

No Image  
Available

<b>Part No:</b> D00379	<b>Base Price:</b> \$1,352.68
<b>Name:</b> Case, Hard Transit, for 12' x 12' x 7' Enclosure	<b>SIN:</b> 426-4N

**Description**

Hard Transit Case for 12'x12'x7' enclosure



<b>Part No:</b> D00380	<b>Base Price:</b> \$1,284.26
<b>Name:</b> Case, Hard Transit, for 12' x 12' x 7' Frame	<b>SIN:</b> 426-4N

**Description**

Hard Transit Case for 12'x12'x7' frame



<b>Part No:</b> D00522	<b>Base Price:</b> \$128.43
<b>Name:</b> Case, Soft, for Power & Signal Panels	<b>SIN:</b> 426-4N

**Description**

Ballistic Cloth Case for Power & Signal Panels T2C3 components are designed to minimize size, weight and power and with their patented features can provide for handling secure data in configurations that are designed for tactical applications.



<b>Part No:</b> D00523	<b>Base Price:</b> \$1,027.41
<b>Name:</b> Case, Hard, for Power and Signal Panels plus ...	<b>SIN:</b> 426-4N

**Description**

Hard Tactical Transit Case for Power & Signal Panels with additional storage. T2C3 components are designed to minimize size, weight and power and with their patented features can provide for handling secure data in configurations that are designed for tactical applications.



<b>Part No:</b> D00528	<b>Base Price:</b> \$2,327.46
<b>Name:</b> 4400 Series Case, Ultra Light Frame	<b>SIN:</b> 426-4N

**Description**

Air Line Checkable Hard Case (14"x44"x18") configured for Ultra Light Frame. T2C3 components are designed to minimize size, weight and power and with their patented features can provide for handling secure data in configurations that are designed for tactical applications.



<b>Part No:</b> D00529	<b>Base Price:</b> \$2,881.61
<b>Name:</b> 2800 Series Case, Ultra Light Shielded Enclosure	<b>SIN:</b> 426-4N

**Description**

Air Line Checkable Case (28"x22"x27") configured for the 9'x12'x7' Ultra Light Shielded Enclosure T2C3 workstations are designed to minimize size, weight and power and with their patented features can provide a complete 4 person command and control center (including ECU) configured for handling secure data up to NSA Type 1 on a single 4'x4' pallet.



<b>Part No:</b> D00556	<b>Base Price:</b> \$1,329.90
<b>Name:</b> 2100 Series Tabletop System Case (No Shielded Enclosure)	<b>SIN:</b> 426-4N

**Description**

This airline carry-on sized (9"x14"x22") case with an integral tote handle and wheels is configured to hold a tabletop T-TEMPEST™ enclosure (approximately) 4 feet long, 2 feet tall and 2 feet deep and Power and Signal Panels must be ordered separately. T2C3 components are designed to minimize size, weight and power and with their patented features can provide for handling secure data up to NSA Type 1 in configurations that are designed for tactical applications.



<b>Part No:</b> D00557	<b>Base Price:</b> \$1,108.25
<b>Name:</b> Case, Enclosure, Airline Check-in Sized (14"x44"x18") (For Enclosure sizes 3'x6'x7', 6'x6'x7', 6'x9'x7')	<b>SIN:</b> 426-4N

**Description**

This airline check-in sized T2C3 case with integral wheels and tote handle, measures 44"x14"x18" and is designed for stowage and shipment of T-TEMPEST™ enclosure sizes 3'x6'x7', 6'x6'x7' and Ultra Light 6'x9'x7'. T2C3 components are designed to minimize size, weight and power and with their patented features can provide for handling secure data up to NSA Type 1 in configurations that are designed for tactical applications.



<b>Part No:</b> D00558	<b>Base Price:</b> \$1,108.25
<b>Name:</b> Case, Frame, Airline Check-in Sized (14"x44"x18") (For Frame sizes 3'x6'x7', 6'x6'x7', 6'x9'x7')	<b>SIN:</b> 426-4N

**Description**

This airline check-in sized T2C3 case with integral wheels and tote handle, measures 44"x14"x18" and is designed for stowage and shipment of T-TEMPEST™ enclosure frames for sizes 3'x6'x7', 6'x6'x7' and 6'x9'x7'. T2C3 components are designed to minimize size, weight and power and with their patented features can provide for handling secure data up to NSA Type 1 in configurations that are designed for tactical applications.





## Shielded Enclosure Panels

### Power and Signal Panels, Complete

**Part No:** D00452 **Base Price:** \$7,433.91  
**Name:** Panel, Power & Signal, "STANDARD" Configuration (Pair) **SIN:** 426-4N

#### Description

Two (2) configured 8"x8" Power and Signal Panels with the following filters:

- 1- One (1) Feed Through Filter, BNC, High Pass (INMARSAT) (ASD00465)
- 2- One (1) Feed Through Filter, Type N, High Pass (INMARSAT) (ASD00474)
- 3- One (1) Feed Through Filter, RJ45, 8 Pin, High Speed Data (STU, STE) (ASD00481)
- 4- One (1) Power Line Filter, 110/220 VAC, 15 Amps, Cylindrical Case (ASD00478)



**Part No:** D00453 **Base Price:** \$7,233.20  
**Name:** Panel, Power & Signal, "ALPHA" Configuration (Pair) **SIN:** 426-4N

#### Description

Two (2) configured 8"x8" Power and Signal Panels with the following filters:

- 1- Two (2) Feed Through Filter, RJ45, 8 Pin, High Speed Data (STU, STE) (ASD00481)
- 2- One (1) Feed Through Waveguide (6 Cables) (ASD00486)
- 3- One (1) Power Line Filter, 110/220 VAC, 15 Amps, Cylindrical Case (ASD00478)

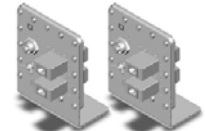


**Part No:** D00454 **Base Price:** \$6,697.90  
**Name:** Panel, Power & Signal, "BRAVO" Configuration (Pair) **SIN:** 426-4N

#### Description

Two (2) configured 8"x8" Power and Signal Panels with the following filters:

- 1- One (1) Feed Through Waveguide (6 Cables) (ASD00486)
- 2- One (1) Feed Through Filter, RJ45, 8 Pin, High Speed Data (STU, STE) (ASD00481)
- 3- Two (2) Power Line Filter, 110/220 VAC, 15 Amps, Rectangular Case (ASD00475)



**Part No:** D00455 **Base Price:** \$8,948.36  
**Name:** Panel, Power & Signal, "CHARLIE" Configuration (Pair) **SIN:** 426-4N

#### Description

Two (2) configured 8"x8" Power and Signal Panels with the following filters:

Panel #1

- 1- One (1) Feed Through Filter, BNC, High Pass (VSAT) (ASD00464)
- 2- One (1) Feed Through Filter, BNC, High Pass (INMARSAT) (ASD00465)
- 3- Three (3) Feed Through Filters, Type N, High Pass (INMARSAT) (ASD00474)
- 4- Four (4) Feed Through Filters, RJ45, 8 Pin, High Speed Data (STU, STE) (ASD00481)
- 5- One (1) Feed Through Filter, High Pass, SMB (VSAT) (ASD00484)
- 6- Two (2) Feed Through Filter, High Pass, SMB (INMARSAT) (ASD00485)

Panel #2



<b>Part No:</b> D00456	<b>Base Price:</b> \$5,529.72
<b>Name:</b> Panel, Power & Signal, "DELTA" Configuration (Pair)	<b>SIN:</b> 426-4N

**Description**

Two (2) configured 8"x8" Power and Signal Panel with the following filters:

- 1- One (1) Feed Through Filter, DB9, RS232 (male to female) (ASD00466)
- 2- One (1) Feed Through Filter, DB25, RS530 (STU) (ASD00470)
- 3- One (1) Feed Through Waveguide (6 Cables) (ASD00486)
- 4- One (1) Power Line Filter, 110/220 VAC, 15 Amps, Cylindrical Case (ASD00478)

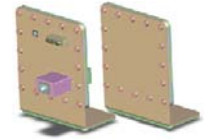


<b>Part No:</b> D00457	<b>Base Price:</b> \$4,114.06
<b>Name:</b> Panel, Power & Signal, "ECHO" Configuration	<b>SIN:</b> 426-4N

**Description**

Two(2) panels, one blank and the other configured as a 8"x8" Power and Signal Panel with the following filters:

- 1- One (1) Feed Through Filter, DB25, RS530 (STU) (ASD00470)
- 2- One (1) Feed Through Filter, RJ45, 8 Pin, High Speed Data (STU, STE) (ASD00481)
- 3- One (1) Power Line Filter, 110/220 VAC, 15 Amps, Rectangular Case (ASD00475)



<b>Part No:</b> D00458	<b>Base Price:</b> \$3,709.49
<b>Name:</b> Panel, Power & Signal, "FOXTROT" Configuration	<b>SIN:</b> 426-4N

**Description**

Configured 8"x8" Power and Signal Panel with the following filters:

- 1- Three (3) Feed Through Filters, RJ45, 8 Pin, High Speed Data (STU, STE) (ASD00481)
- 2- Two (2) Feed Through Filter, DB25, RS530 (STU) (ASD00470)
- 3- One (1) Power Line Filter, 110/220 VAC, 15 Amps, Cylindrical Case (ASD00478)



<b>Part No:</b> D00459	<b>Base Price:</b> \$1,105.25
<b>Name:</b> Panel, Power & Signal, "GOLF" Configuration	<b>SIN:</b> 426-4N

**Description**

Configured 5" Diameter Power and Signal Panel with the following filters:

- 1- One (1) Power Line Filter, 110/220 VAC, 15 Amps, Cylindrical Case (ASD00478)



<b>Part No:</b> D00460	<b>Base Price:</b> \$616.01
<b>Name:</b> Panel, Power & Signal, "HOTEL" Configuration	<b>SIN:</b> 426-4N

**Description**

Configured 5" Diameter Power and Signal Panel with the following filters:

- 1- One (1) Feed Through Filter, DB9 (Keyboard and Mouse) (ASD00467)



<b>Part No:</b> D00461	<b>Base Price:</b> \$881.86
<b>Name:</b> Panel, Power & Signal, "INDIA" Configuration	<b>SIN:</b> 426-4N

**Description**

Configured 5" Diameter Power and Signal Panel with the following filters:

- 1- One (1) Feed Through Filter, RJ45, 8 Pin, High Speed Data (STU, STE) (ASD00481)

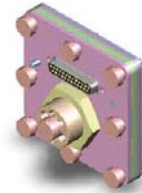


<b>Part No:</b> D00571	<b>Base Price:</b> \$3,101.17
<b>Name:</b> Power and Signal Panel, 3.75"x3.75", Configuration #3-01 (UL)	<b>SIN:</b> 426-4N

**Description**

Configured 3.75"x3.75" Panel with the following filters and cable:

- 1- One (1) Feed Through Waveguide (6 cables) (ASD0046)
- 2- One (1) DB25 Panel Mount Feed Through (ASD00565)
- 3- Two (2) DB25 to Two (2) DB9 and One (1) RJ45 Breakout cables (ASD00566)
- 4- One (1) DB9 in-line filter (ASD00567)

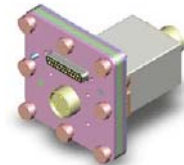


<b>Part No:</b> D00572	<b>Base Price:</b> \$4,784.37
<b>Name:</b> Power and Signal Panel, 3.75"x3.75", Configuration #3-02 (UL)	<b>SIN:</b> 426-4N

**Description**

Configured 3.75"x3.75" Panel with the following filters and cable:

- 1- One (1) DB25 Panel Mount Feed Through (ASD00565)
- 2- Two (2) DB25 to Two (2) DB9 and One (1) RJ45 Breakout cables (ASD00566)
- 3- One (1) DB9 in-line filter (ASD00567)
- 4- One (1) Power Line Filter, 20 Amp, Panel Mount (ASD00581)
- 5- One (1) Power Line Filter (Female) Pigtail (ASD00579)
- 6- One (1) Power Line Filter (Male) Pigtail (ASD00580)

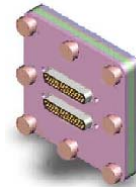


<b>Part No:</b> D00573	<b>Base Price:</b> \$3,269.18
<b>Name:</b> Power and Signal Panel, 3.75"x3.75", Configuration #3-03 (UL)	<b>SIN:</b> 426-4N

**Description**

Configured 3.75"x3.75" Panel with the following filters and cable:

- 1- Two (2) DB25 Panel Mount Feed Through (ASD00565)
- 2- Four (4) DB25 to Two (2) DB9 and One (1) RJ45 Breakout cables (ASD00566)
- 3- Two (2) DB9 in-line filter (ASD00567)



<b>Part No:</b> D00574	<b>Base Price:</b> \$3,912.66
<b>Name:</b> Power and Signal Panel, 5" Diameter, Configuration #5-01 (UL)	<b>SIN:</b> 426-4N

**Description**

Configured 5" Diameter Power and Signal Panel with the following filters:

- 1- One (1) Feed Through Filter, DB9 (Keyboard and Mouse) (ASD00567)
- 2- One (1) Feed Through Filter, DB9 (Serial Port) (ASD00566)
- 3- One (1) Power Line Filter, 20A, Panel Mount (ASD00581)
- 4- One (1) Power Line Filter Shielded Pigtail (Female) (ASD00579)
- 5- One (1) Power Line Filter Shielded Pigtail (Male) (ASD00580)



<b>Part No:</b> D00575	<b>Base Price:</b> \$2,080.36
<b>Name:</b> Power and Signal Panel, 5" Diameter, Configuration #5-02 (UL)	<b>SIN:</b> 426-4N

**Description**

Configured 5" Diameter Power and Signal Panel with the following filters:

- 1- One (1) Feed Through Filter, Triple (3) RJ45 Panel Mount (ASD00564)



<b>Part No:</b> D00576	<b>Base Price:</b> \$4,863.19
<b>Name:</b> Power and Signal Panel, 8"x8", Configuration #8-01 (UL)	<b>SIN:</b> 426-4N

**Description**

Pre-Configured 8"x8" Power and Signal Panel with the following filters:

- 1- Three (3) Feed Through Filter, DB25, RS530 (STU) (ASD00562)
- 2- One (1) Feed Through Filter, Triple (3) RJ45 Panel Mount (ASD00564)
- 3- One (1) Power Line Filter, 20A, Panel Mount (ASD00581)
- 4- One (1) Power Line Filter Shielded Pigtail (Female) (ASD00579)
- 5- One (1) Power Line Filter Shielded Pigtail (Male) (ASD00580)



<b>Part No:</b> D00577	<b>Base Price:</b> \$2,701.10
<b>Name:</b> Power and Signal Panel, 8"x8", Configuration #8-02 (UL)	<b>SIN:</b> 426-4N

**Description**

Pre-Configured 8"x8" Power and Signal Panel with the following filters:

- 1- Two (2) Feed Through Filter, DB25, RS530 (STU) (ASD00470)
- 2- One (1) Feed Through Filter, Triple (3) RJ45 Panel Mount (ASD00564)



<b>Part No:</b> D00578	<b>Base Price:</b> \$5,564.41
<b>Name:</b> Power and Signal Panel, 8"x8", Configuration #8-03 (UL)	<b>SIN:</b> 426-4N

**Description**

Pre-Configured 8"x8" Power and Signal with the following filters:

- 1- Two (2) Feed Through Filters, Triple RJ45 Panel Mount (ASD00564)
- 2- Two (2) Feed Through Waveguide (6 cables) (ASD00485)
- 3- One (1) Power Line Filter, 20A, Panel Mount (ASD00581)
- 4- One (1) Power Line Filter Pigtail (Female) (ASD00579)
- 5- One (1) Power Line Filter Pigtail (Male) (ASD00580)



## Power and Signal Panels, Components

<b>Part No:</b> D00486	<b>Base Price:</b> \$281.70
<b>Name:</b> Feed Through, Waveguide, (6 cables)	<b>SIN:</b> 426-4N

### Description

Wave Guide Filter Assembly for 6 fiber optic cables.



<b>Part No:</b> D00488	<b>Base Price:</b> \$409.07
<b>Name:</b> Panel, Power & Signal, Blank 5" Round	<b>SIN:</b> 426-4N

### Description

Blank 5" Round Power & Signal Panel T2C3 components are designed to minimize size, weight and power and with their patented features can provide for handling secure data in configurations that are designed for tactical applications.



<b>Part No:</b> D00489	<b>Base Price:</b> \$948.10
<b>Name:</b> Panel, Power & Signal, Blank 8" x 8"	<b>SIN:</b> 426-4N

### Description

Blank 8"x8" Square Power & Signal Panel T2C3 components are designed to minimize size, weight and power and with their patented features can provide for handling secure data in configurations that are designed for tactical applications.



<b>Part No:</b> D00562	<b>Base Price:</b> \$365.22
<b>Name:</b> Feed Through Filter, DB25, RS530 Panel Mount (UL)	<b>SIN:</b> 426-4N

### Description

Low profile RS-530 DB25 connector that can be used either as a panel mount or utilized in the T2C3 signal panel interface boxes for use with the T-TEMPEST™ shielded enclosures. T2C3 components are designed to minimize size, weight and power and with their patented features can provide for handling secure data up to NSA Type 1 in configurations that are designed for tactical applications.



<b>Part No:</b> D00563	<b>Base Price:</b> \$233.74
<b>Name:</b> Feed Through Filter, DB9, Keyboard/Mouse Panel Mount (UL)	<b>SIN:</b> 426-4N

### Description

Low profile keyboard/mouse DB9 connector that can be used either as a panel mount or utilized in the T2C3 signal panel interface boxes for the T-TEMPEST™ shielded enclosures. T2C3 components are designed to minimize size, weight and power and with their patented features can provide for handling secure data up to NSA Type 1 in configurations that are designed for tactical applications.



<b>Part No:</b> D00564	<b>Base Price:</b> \$1,022.61
<b>Name:</b> Feed Through Filter, Triple (3) RJ45 Panel Mount (UL)	<b>SIN:</b> 426-4N

**Description**

Small profile triple RJ45 panel mount connector that can be used in the T2C3 signal panel plates through the T-TEMPEST™ shielded enclosure wall. T2C3 components are designed to minimize size, weight and power and with their patented features can provide for handling secure data up to NSA Type 1 in configurations that are designed for tactical applications.



<b>Part No:</b> D00565	<b>Base Price:</b> \$394.44
<b>Name:</b> Feed Through DB25 Panel Mount Connector for use with the DB25 Multi-Connector	<b>SIN:</b> 426-4N

**Description**

Low profile DB25 panel mount (25 pin) connector to be used for the T2C3 signal interface through the panel mounted plate in the T-TEMPEST™ enclosures. For use with the DB25 Multi-Connector Breakout Cable (UL) or breakout box. T2C3 components are designed to minimize size, weight and power and with their patented features can provide for handling secure data up to NSA Type 1 in configurations that are designed for tactical applications.



<b>Part No:</b> D00566	<b>Base Price:</b> \$657.39
<b>Name:</b> Feed Through Filter Multi-Connector Breakout Cable (Two (2) DB9 connectors and one (1) RJ45 connector)	<b>SIN:</b> 426-4N

**Description**

A signal cable to be used with DB25 panel mount feed through connector (ASD00565) that provides connectivity for two (2) DB9 connectors and one (1) RJ45 connector. The appropriate DB9 and RJ45 filters are purchased separately. T2C3 components are designed to minimize size, weight and power and with their patented features can provide for handling secure data up to NSA Type 1 in configurations that are designed for tactical applications.



<b>Part No:</b> D00567	<b>Base Price:</b> \$255.65
<b>Name:</b> Feed Through Filter, DB9, Serial Port, Panel Mount (UL)	<b>SIN:</b> 426-4N

**Description**

Low profile Serial Port DB9 connector that can be used either as an inline mount or utilized in the T2C3 signal panel interface boxes. T2C3 components are designed to minimize size, weight and power and with their patented features can provide for handling secure data up to NSA Type 1 in configurations that are designed for tactical applications.



<b>Part No:</b> D00570	<b>Base Price:</b> \$1,022.61
<b>Name:</b> Power and Signal Panel, 3.75"x3.75", Blank (UL)	<b>SIN:</b> 426-4N

**Description**

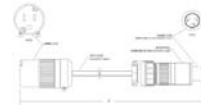
Blank Power and Signal panel that mounts on the small power and signal aperture to which the small power and signal panel assemblies mount or the cover if no filters are required. T2C3 components are designed to minimize size, weight and power and with their patented features can provide for handling secure data up to NSA Type 1 in configurations that are designed for tactical applications.



<b>Part No:</b> D00579	<b>Base Price:</b> \$387.13
<b>Name:</b> Power Line Filter Shielded Pigtail, Female	<b>SIN:</b> 426-4N

**Description**

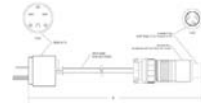
Cable designed to mate with the 20A panel mounted Power Line Filter (D00581) used on the interior of the T-TEMPEST™ enclosure. T2C3 components are designed to minimize size, weight and power and with their patented features can provide for handling secure data up to NSA Type 1 in configurations that are designed for tactical applications.



<b>Part No:</b> D00580	<b>Base Price:</b> \$387.13
<b>Name:</b> Power Line Filter Shielded Pigtail, Male	<b>SIN:</b> 426-4N

**Description**

Cable designed to mate with the 20A panel mounted Power Line Filter (D00581) used on the exterior of the T-TEMPEST™ enclosure. T2C3 components are designed to minimize size, weight and power and with their patented features can provide for handling secure data up to NSA Type 1 in configurations that are designed for tactical applications.



<b>Part No:</b> D00581	<b>Base Price:</b> \$1,022.61
<b>Name:</b> Power Line Filter, 20A, Panel Mount (uses Shielded Cable Pigtails)	<b>SIN:</b> 426-4N

**Description**

This requires an exterior Power line pigtail (D00580) and an interior power pigtail (D00579) or termination box (D00582) or equivalent interconnection for operation. T2C3 components are designed to minimize size, weight and power and with their patented features can provide for handling secure data up to NSA Type 1 in configurations that are designed for tactical applications.



<b>Part No:</b> D00582	<b>Base Price:</b> \$365.22
<b>Name:</b> Power Outlet, Shielded with Surge Suppression (Attaches to D00580)	<b>SIN:</b> 426-4N

**Description**

Multi-outlet surge suppression box modified to mate with the 20A panel mounted Power Line Filter (D00581) used on the interior of the T-TEMPEST™ enclosure. T2C3 components are designed to minimize size, weight and power and with their patented features can provide for handling secure data up to NSA Type 1 in configurations that are designed for tactical applications.



## Shielded Product Accessories

### ECU

<b>Part No:</b> D00425	<b>Base Price:</b> \$613.65
<b>Name:</b> ECU Duct Kit (4")	<b>SIN:</b> 426-4N

#### Description

4" Environmental Control Unit duct kit. Includes: two supply and two returns (ECU) ventilation ducts with cuff assemblies.

No Image Available

<b>Part No:</b> D00426	<b>Base Price:</b> \$957.22
<b>Name:</b> ECU Duct Kit (6")	<b>SIN:</b> 426-4N

#### Description

6" Environmental Control Unit duct kit, Includes: two supply and two return (ECU) ventilation ducts with cuff assemblies.



<b>Part No:</b> D00427	<b>Base Price:</b> \$87.12
<b>Name:</b> ECU Fan Assembly (115 VAC)	<b>SIN:</b> 426-4N

#### Description

5" Fan Assembly, 115 Volt, with power cord.



<b>Part No:</b> D00428	<b>Base Price:</b> \$87.12
<b>Name:</b> ECU Fan Assembly (230 VAC)	<b>SIN:</b> 426-4N

#### Description

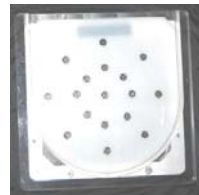
5" Fan Assembly, 230 Volt, with power cord.



<b>Part No:</b> D00441	<b>Base Price:</b> \$82.19
<b>Name:</b> Honeycomb Cover Set, 5"	<b>SIN:</b> 426-4N

#### Description

Replacement 5" honeycomb covers (set of 8).

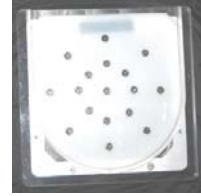




<b>Part No:</b> D00442	<b>Base Price:</b> \$98.63
<b>Name:</b> Honeycomb Cover Set, 7"	<b>SIN:</b> 426-4N

**Description**

Replacement 7" honeycomb covers (set of 8).



<b>Part No:</b> D00447	<b>Base Price:</b> \$287.67
<b>Name:</b> Case, lightweight, for ECU Hoses	<b>SIN:</b> 426-4N

**Description**

Lightweight Shipping and Storage Case for ECU hoses. Airline carry-on sized case configured to ship and store ECU hoses



<b>Part No:</b> D00525	<b>Base Price:</b> \$24,937.03
<b>Name:</b> ECU, Lightweight Air Conditioner (9,000 BTU)	<b>SIN:</b> 426-4N

**Description**

Lightweight 9000 BTU Air Conditioner and Hoses in T2/C3 Casing Solution Packaged in airline checkable case with integral shock isolation system, wheel and tote handle.



<b>Part No:</b> D00559	<b>Base Price:</b> \$4,987.13
<b>Name:</b> ECU, Light Weight, 7,000 BTU in Airline Check-in Sized (28"x22"x26") Case (Cut Foa	<b>SIN:</b> 426-4N

**Description**

Light weight 7,000 BTU ECU packaged in an airline check in sized case (28"x22"x26") with cut foam for stowage and shipment of the ECU configured to support T-TEMPEST™ enclosures 6'x6'x7' to 9'x12'x7' operating in an indoor environment. T2C3 components are designed to minimize size, weight and power and with their patented features can provide for handling secure data up to NSA Type 1 in configurations that are designed for tactical applications.



<b>Part No:</b> D00560	<b>Base Price:</b> \$6,427.85
<b>Name:</b> ECU, Light Weight, 7,000 BTU in Airline Check-in Sized (28"x22"x26") Case (shock is	<b>SIN:</b> 426-4N

**Description**

Light weight 7,000 BTU ECU packaged in an airline check in sized case (28"x22"x26") with shock isolators for stowage and shipment of the ECU configured to support T-TEMPEST™ enclosures 6'x6'x7' to 9'x12'x7' operating in an indoor environment. T2C3 components are designed to minimize size, weight and power and with their patented features can provide for handling secure data up to NSA Type 1 in configurations that are designed for tactical applications.



## Lighting

<b>Part No:</b> D00443	<b>Base Price:</b> \$238.35
<b>Name:</b> Light, 23 Watt, High Impact Resistance, Stringable	<b>SIN:</b> 426-4N

### Description

35 watt, Stringable, high impact resistance light fixture with optional blue filter. T2C3 components are designed to minimize size, weight and power and with their patented features can provide for handling secure data in configurations that are designed for tactical applications.



<b>Part No:</b> D00535	<b>Base Price:</b> \$709.32
<b>Name:</b> LED Light System, Power Box and 12" Lights	<b>SIN:</b> 426-4N

### Description

LED lighting system for use in shielded enclosures that includes two (2) LED lite sticks 12" long and a power interface box that will accept wide range AC (85 to 265 VAC) or 12 VDC (from integrator power products) and power up to 10 lite sticks. T2C3 workstations are designed to minimize size, weight and power and with their patented features can provide a complete 4 person command and control center (including ECU) configured for handling secure data up to NSA Type 1 on a single 4'x4' pallet.



<b>Part No:</b> D00537	<b>Base Price:</b> \$232.75
<b>Name:</b> LED Lite Stick, 12", 2W	<b>SIN:</b> 426-4N

### Description

LED light stick that operates on 12 VDC and plugs into a cigarette lighter socket on one end and accepts additional light sticks with a cigarette lighter socket on the other end allowing them to be used together. T2C3 workstations are designed to minimize size, weight and power and with their patented features can provide a complete 4 person command and control center (including ECU) configured for handling secure data up to NSA Type 1 on a single 4'x4' pallet.



<b>Part No:</b> D00539	<b>Base Price:</b> \$277.08
<b>Name:</b> LED Light System Power Box (65W)	<b>SIN:</b> 426-4N

### Description

LED power box that will accept wide range AC (85 to 265 VAC) or 12 VDC to power up to 10 light sticks that can be plugged into (either of two) +12 VDC cigarette lighter sockets in the power box. T2C3 workstations are designed to minimize size, weight and power and with their patented features can provide a complete 4 person command and control center (including ECU) configured for handling secure data up to NSA Type 1 on a single 4'x4' pallet.



<b>Part No:</b> D00540	<b>Base Price:</b> \$1,052.90
<b>Name:</b> Shipping Case for LED Lighting System	<b>SIN:</b> 426-4N

### Description

Airline carry-on sized (9"x14"x22") T2C3 case configured to hold the LED lighting system and additional light sticks. T2C3 workstations are designed to minimize size, weight and power and with their patented features can provide a complete 4 person command and control center (including ECU) configured for handling secure data up to NSA Type 1 on a single 4'x4' pallet.



## Logos

<b>Part No:</b> D00344	<b>Base Price:</b> \$138.54
<b>Name:</b> Logo, Fixed, Embroidery, Single Color, Large	<b>SIN:</b> 426-4N

### Description

Embroidery, Single Color, Largest Dimension <6 inches (up to 5 copies) For use on T2C3 fabric components that are neither weatherproof or shielded. (Customer to supply camera-ready artwork).



<b>Part No:</b> D00345	<b>Base Price:</b> \$166.25
<b>Name:</b> Logo, Fixed, Embroidery, Two Color, Large	<b>SIN:</b> 426-4N

### Description

Embroidery, Two Color, Largest Dimension <6 inches (up to 5 copies) For use on T2C3 fabric components that are neither weatherproof or shielded. (Customer to supply camera-ready artwork).



<b>Part No:</b> D00346	<b>Base Price:</b> \$127.46
<b>Name:</b> Logo, Fixed, Embroidery, Single Color, Small	<b>SIN:</b> 426-4N

### Description

Embroidery, Single Color, Largest Dimension <2 inches (up to 5 copies) For use on T2C3 fabric components that are neither weatherproof or shielded. (Customer to supply camera-ready artwork).



<b>Part No:</b> D00347	<b>Base Price:</b> \$133.00
<b>Name:</b> Logo, Fixed, Embroidery, Two Color, Small	<b>SIN:</b> 426-4N

### Description

Embroidery, Two Color, Largest Dimension <2 inches (up to 5 copies) For use on T2C3 fabric components that are neither weatherproof or shielded. (Customer to supply camera-ready artwork).



<b>Part No:</b> D00490	<b>Base Price:</b> \$166.25
<b>Name:</b> Logo, Detachable, Silk Screened	<b>SIN:</b> 426-4N

### Description

Detachable Agency Logo includes: silk screening, material, and Velcro type mounting (Customer to supply camera-ready artwork). For use on T2C3 fabric components that are weatherproof or shielded. (Customer to supply camera-ready artwork).



<b>Part No:</b> D00584	<b>Base Price:</b> \$44.33
<b>Name:</b> Logo, Fixed, Embroidery, Single Color, Large (Per Piece over 5 Pieces)	<b>SIN:</b> 426-4N

**Description**

The recurring cost per piece after set up and initial quantity of five (5) pieces, reference D00344.



<b>Part No:</b> D00585	<b>Base Price:</b> \$66.50
<b>Name:</b> Logo, Fixed, Embroidery, Two Color, Large (Per Piece Over 5 Pieces)	<b>SIN:</b> 426-4N

**Description**

The recurring cost per piece after set up and initial quantity of five (5) pieces, reference D00345.



<b>Part No:</b> D00586	<b>Base Price:</b> \$11.08
<b>Name:</b> Logo, Fixed, Embroidery, Single Color, Small (Per Piece over 5 Pieces)	<b>SIN:</b> 426-4N

**Description**

The recurring cost per piece after set up and initial quantity of five (5) pieces, reference D00346.



<b>Part No:</b> D00587	<b>Base Price:</b> \$16.62
<b>Name:</b> Logo, Fixed, Embroidery, Two Color, Small (Per Piece over 5 Pieces)	<b>SIN:</b> 426-4N

**Description**

The recurring cost per piece after set up and initial quantity of five (5) pieces, reference D00347.



<b>Part No:</b> D00588	<b>Base Price:</b> \$110.83
<b>Name:</b> Logo, Fixed, Silk Screen, Single Color, Small (Setup and up to 5 Pieces)	<b>SIN:</b> 426-4N

**Description**

Setup and silk screen of single color silkscreen of up to five (5) pieces with largest dimension less than 2".



<b>Part No:</b> D00589	<b>Base Price:</b> \$4.43
<b>Name:</b> Logo, Fixed, Silk Screen, Single Color, Small (Per Piece over 5 Pieces)	<b>SIN:</b> 426-4N

**Description**

The recurring cost per piece after set up and initial quantity of five (5) pieces, reference D00588.



## Other Accessories

<b>Part No:</b> D00521	<b>Base Price:</b> \$22.42
<b>Name:</b> Power, Shielded Power Cord	<b>SIN:</b> 426-4N

**Description**

Shielded power cord for use with shielded enclosures. T2C3 components are designed to minimize size, weight and power and with their patented features can provide for handling secure data in configurations that are designed for tactical applications.



<b>Part No:</b> D00590	<b>Base Price:</b> \$1,753.05
<b>Name:</b> 1U Power and Signal Interface Unit (for 2300TN Case)	<b>SIN:</b> 426-4N

**Description**

1U 19 inch rack designed to work with the T-TEMPEST™ small power and signal panel design with the 20A Power Line Filter and the DB25 composite signal connector. Signal filters are purchased separately. T2C3 components are designed to minimize size, weight and power and with their patented features can provide for handling secure data up to NSA Type 1 in configurations that are designed for tactical applications.

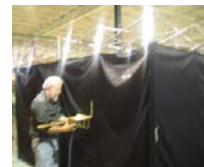


## Testing and Test Products

<b>Part No:</b> D00492	<b>Base Price:</b> \$16,624.69
<b>Name:</b> Testing, Additional, Shield Effectiveness	<b>SIN:</b> 426-4N

**Description**

Set-up and test of enclosure shielding effectiveness at 400MHz and 1GHz at the Action Systems facility. Hard-copy report of results provided.



<b>Part No:</b> D00534	<b>Base Price:</b> \$2,438.29
<b>Name:</b> Tactical Shielding Effective Tool (TSET)	<b>SIN:</b> 426-4N

**Description**

Hand held RF transmitter and hand held received that will measure the shield effectiveness of shielded enclosures and ouches in the field to ensure proper shielding effectiveness. T2C3 workstations are designed to minimize size, weight and power and with their patented features can provide a complete 4 person command and control center (including ECU) configured for handling secure data up to NSA Type 1 on a single 4'x4' pallet.



## Other Products

### Cases for Communications and Computer Systems

**Part No:** D00228

**Name:** Integrator 2300TN Secure Tactical Communications System

**Base Price:** \$7,304.79

**SIN:** 426-4N

#### Description

Supports three (3) 1U or one (1) 3U standard 19" rackmount devices up to 12 inches deep. The 2300TN is a tactical communications platform capable of supporting a wide array of COTS components required in tactical communications configurations. The system is contained in an environmentally sealed airline carry-on sized (9" x 14" x 22") case with an integral tote handle and wheels. The system includes an accessory case containing cables, phone adapters and power adapters that can be used worldwide. With optional power modules the case can operate on its own batteries or utilizing wide range AC (85 to 265 VAC) or wide range DC (10 to 36 VDC) power.



## Miscellaneous Products

**Part No:** D00235 **Base Price:** \$1,753.15  
**Name:** 1U Power Interface Unit (for 2300TN) **SIN:** 426-4N

### Description

Configured as a 1U slice this power interface unit fits in the 2300TN case enabling the case to operate on its own batteries or utilize wide range AC (85 to 265 VAC) or wide range DC (10 to 36 VDC) power.

No Image Available

**Part No:** D00524 **Base Price:** \$44.37  
**Name:** Power, Surge Suppressor, Multi-Outlet **SIN:** 426-4N

### Description

Multi-outlet Surge Suppressor with cord for use inside shielded enclosures. T2C3 components are designed to minimize size, weight and power and with their patented features can provide for handling secure data in configurations that are designed for tactical applications.



**Part No:** D00561 **Base Price:** \$2,438.15  
**Name:** ECU Power Transformer, 3KW in AirLine Carry-on Sized Case (9"x14"x22") **SIN:** 426-4N

### Description

Power Transformer (3 KW) configured in a T2C3 airline carry-on sized case (9"x14"x22") with integral wheels and tote handle that enables the ECU to be operated with 220VAC power or 110 VAC power. T2C3 components are designed to minimize size, weight and power and with their patented features can provide for handling secure data up to NSA Type 1 in configurations that are designed for tactical applications.



**Part No:** D00583 **Base Price:** \$730.44  
**Name:** Keyboard, TEMPEST, Small **SIN:** 426-4N

### Description

TEMPEST, keyboard, small modified to be used with the tabletop T-TEMPEST™ enclosures plugging into the Power and Signal Panels and stowing within the standard case solutions. T2C3 components are designed to minimize size, weight and power and with their patented features can provide for handling secure data up to NSA Type 1 in configurations that are designed for tactical applications.



## General Information

### Applicable Patents

U.S. Patent 5,212,628	Modular Portable Workstation Having A Movable Support Tray
U.S. Patent 5,226,540	Carrying Case For A Portable Workstation
U.S. Patent 5,442,512	Modular Portable Computer Workstation Selectively Powered By Either An Internal Battery, An Internal Battery Charger, Or An External DC Input
U.S. Patent 5,590,022	Shielded Modular Portable Computer Workstation Having Cable Routing Means
U.S. Patent 5,908,043	Portable Tent Assembly for Use With a Radio Frequency Shielded Enclosure (issue date June 1, 1999)
U.S. Patent 6,068,009	Free Standing, Portable tent Assembly with Flexible, Electronic Signal Shielded Enclosure (issued May 30, 2000)
U.S. Patent 6,208,507	Carrying Case Having Plug-In Connector And Switch Modules For A Compact Portable Computer Workstation.
U.S. Patent 6,229,698	Portable Office Having A Removable Computer Workstation And Shock Isolation Means.
U.S. Patent 6,585,090	Stackable Interlocking Carrying Case for a Portable Computer

### Assumptions

Action Systems can substitute hardware and/or software equal to or better than those listed, including "in brand" changes from those listed in order to ensure overall performance and/or schedule requirements are met. The Integrator product is an integration of several Commercial Off-the-Shelf (COTS) products into a single operational system. This assumption allows Action Systems to ensure "the most recent" hardware and software releases or patches are utilized, providing the best possible product within given cost and schedule constraints.

Due to size and computer resource limitations, there may be restrictions on the installation and operation of some options, particularly with other, similar components.

All systems and components include one-year parts and labor warranty. Extended warranty periods, up to three years, are available. Please call for full information.

### GSA Contract Information

GSA Schedule # GS-07F-9545S

### Type of Contractor

Small Disadvantaged Business  
Woman Owned Small Business  
8(a) Certified Small Business